

BUILDING ON OUR *Successes*



**2014 Annual Report
Schuylkill River Development Corporation**

Building the Banks



The Schuylkill Banks Boardwalk opened to the public, extending riverfront access 2,000 feet to South Street and creating unique river and skyline views. Philadelphians celebrated the grand opening of the Boardwalk with an exclusive pre-opening fun run fundraiser, an October 2 ribbon cutting ceremony, and 1920s themed community celebration on October 5. Trail users, neighbors, and members of the press have all provided favorable reviews of the Boardwalk, which many immediately integrated into their daily lives for both commuting and recreation.

Schuylkill Banks 2014 Trail & Greenway Statistics



19,000
USER TRIPS
PER WEEK

2,000 FEET

OF TRAIL BUILT

2 MILES
COMPLETED
BEFORE 2014

.38 MILES
COMPLETED
IN 2014

5.6 MILES
TO GO

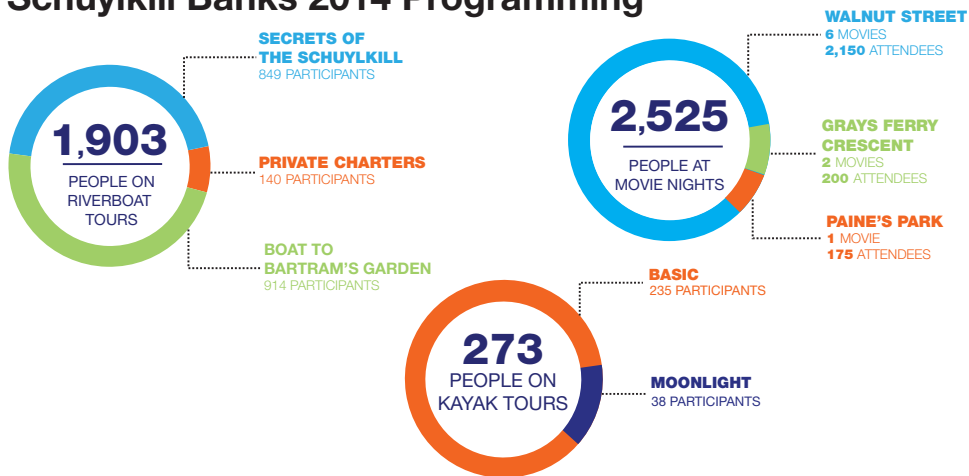


Activating the Riverfront



The Schuylkill River was named 2014 River of the Year by the PA Office of Watershed Resources. This honor was celebrated by SRDC and partners with guided bike rides, the annual Philly Fun Fishing Fest, special presentations, and the first Walnut 2 Walnut regatta in addition to SRDC's regularly scheduled movie nights, kayak tours, and riverboat tours. Thousands of people came down to the Banks for a variety of programming in 2014, continuing to activate the riverfront in Center City and Grays Ferry.

Schuylkill Banks 2014 Programming

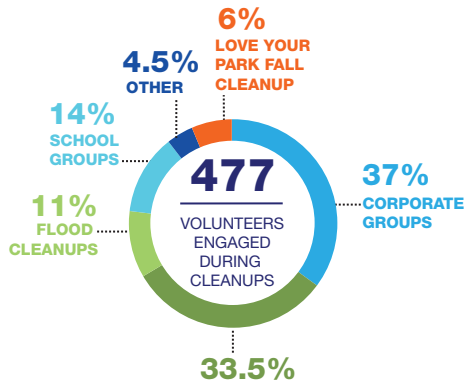


Maintaining the Trail



Mayday took on a new meaning for SRDC, as an unexpectedly heavy rainstorm hit during an unusually high tide on May 1, 2014. This resulted in massive flooding along Schuylkill Banks, to a level that staff had never before seen. The trail was closed for a day while waters receded, unfortunately depositing a lot of debris and moving decorative gravel from the far side of the greenway into lawn areas. Neighbors came out over the course of the following weeks to help SRDC and PPR staff get the trail back in top shape before the summer season began in full force.

SRDC 2014 Maintenance Efforts



SRDC Leadership

2014-2015 Board of Directors:

Chairman:

Gerard H. Sweeney
President & CEO, Brandywine Realty Trust

Vice Chairman:

James Tucker
Senior Vice President for Student Life & Administrative Services, Drexel University

Secretary:

John Francis Gough, Esq.
Founder and Manager, Gough Law Associates, RLLC

Treasurer:

Anne Papageorge
Vice President, Facilities and Real Estate, University of Pennsylvania

Madeline Bell

President & Chief Operating Officer, The Children's Hospital of Philadelphia

Rina Cutler

Deputy Mayor for Transportation & Utilities, City of Philadelphia

Michael DiBerardinis

Deputy Mayor for Environmental and Community Resources; Commissioner of Parks & Recreation, City of Philadelphia

William Goetz

Resident Vice President, CSX Transportation

Kevin Gorman, Esq.

Vice President & General Counsel, SCA Americas, Inc.

John Grady

President, Philadelphia Industrial Development Corporation

Alan Greenberger

Deputy Mayor for Planning & Economic Development and Director of Commerce, City of Philadelphia

Dr. Amy Gutmann

President, University of Pennsylvania

Edward Hazzouri, Esq.

Chairman, Hazzouri & Associates, LLC

Frank Jiruska

Director of Energy & Marketing Services, PECO Energy Company

Paul Levy

President & CEO, Center City District

Bruce Looloian

AVP-Real Estate Development, Amtrak

Dennis Maloomian

President, Realen Properties

Joseph McGinn

Senior Manager of Public Affairs, Sunoco

Robert N. C. Nix, III, Esq.

President, Pleasant News, Inc.

Keith A. Orris

Senior Vice President for Corporate Relations & Economic Development, Drexel University

Karen C. Smith

Andrew C. Topping

SVP, Labor Relations & Compliance, Comcast Cable Communication

John Westrum

CEO and Chairman, Westrum Development Company

Staff:

Joseph Syrnick
President & CEO

Lane Fike
Director of Capital Projects

Josh Nims
Operations Manager

Danielle Gray
Director of Marketing & Development

Lucy McDonald
Office Manager & Administrative Assistant

Zoe Axelrod
Design Assistant & Outreach Coordinator

Blaise Syrnick
Assistant Operations Manager



Supporting *the Effort*

Capital & Operational Support (7/1/13 - 6/30/14)

Capital Support

Coastal Zone Management Program (PA Department of Environmental Protection & National Atmospheric Administration)
City of Philadelphia
Commonwealth of Pennsylvania
Delaware Valley Regional Planning Commission
McLean Foundation
William Penn Foundation

Operational Support

Albert Lofgren & Antoinette Farrar Seymour Donor
Advised fund
Ammann & Whitney
Amtrak
Brandywine Realty Trust
Children's Hospital of Philadelphia
City of Philadelphia
CSX
Drexel University
Farm Truck
Hazzouri Associates
John Gough
PECO

Melissa Heller
Pennoni Associates
Pepper Hamilton
Philadelphia Runner
Realan Properties
Shake Shack
Sunoco
Raynier Foundation
Robert Nix
University of Pennsylvania
Urban Engineers
Westside Commons

2014 Bench Program

Susan & Biff Wetherill

2014 Volunteer Team

Chas & Stacey Ryan
Damian Albano
Daniel Loughrey
David Curtis
David Hunt
Ethan Fox
Florianne Ledesma
Fran Levi
James Price
Janice Mulugeta

Jeanne Burkel
Jeff Burger
Jim Ruddick
Jocelyn Wilson
John Ritter
Justin Holder
Kakeru Nemoto
Karen Smith
Liana Vaccari
Madhur Parihar

Megan O'Karma
Meredith Pauly
Miki Rotman
Morgan Hugo
Nannette Robertson
Noelle Beaumont
Sonia Godfrey
Stacey Butterfield
Tom Roach

Supporting *the Effort*

Annual Giving Donors (7/1/13 - 6/30/14)

George Ahern	Luis DeVelasco	Martin McNamara
Jane Allsopp	Frank Dilorio	Katy Milkman and Cullen Blake
Dean Anderson	Daniel Drecksage	Andrew L. Miller
Trina and John Andras	Sara Dubberly	Marilyn Mitchell
Anonymous	Carolyn Duffy	Susan Moran Designs, Inc.
Clay Armstrong	Kendra L Dunn	Delia and Michael Neuman
Dirk Ave	Mary R. Erfle	Old Eagle Garden Club
Ira Barkan	Melvin and Linda Esh	James Oser
Judith Baron	Extreme Philly Fishing	Neil Oxman
Mira Baylson and Hal Morra	Susan Fox	Jeff Pepper
Perry Benson	Sally Frazza	Christopher Plastaras
Ethan Birchard	William Goldenberg and Paula Cohen	Alan Razak
Samuel Bobrow	Robert Groves	Harry Roth
E. Talmage Brennan	Will Harries	Lionel Rubin
Idee Brown	Carol Ann Harris	Eric Satlow
Jeanne Buerkel	Diane Hedrich	Schuykill Mile Time Trial
Emmerich T. Buziak	Hara Jacobs	Jean V. Smith
Julie Calem	William D. Katz	Robert C. Smith
Monica Calkins	Judith Kornfield	Judith Stein
Richard Canel	Jennifer Kraft	Sarah Stuart
Rebecca Canna	Irene Lambrou	Stephen Stumpf
Michael A Carasik	Ronald Levine	David W. Sweet
Matthew Carey	Rafael Levites	Halley E Tarr
Timothy P Carey	Richard Levy	Herb and Laurie Taylor
Craig Carnaroli	John G Livewell	The Hub
Cameron A. Cassedy	Thomas Lyon	Vanguard Group Foundation
Roberta Chase	John Paul MacDuffie	Branimir Vasilic
Catharine Ciric	Roderick MacNeil	Viola Vetter
Matthew Cohen	David Major	Raina Vyas
Christian Conroy	Joseph McAtee	Waste Management
Elliott Curson	Bill and Lorraine McKenna	Elliott Weiss
David Curtis	Joan McNamara	Lawrence White
Terry Decker		

Get Involved

SRDC is creating and implementing a long-term, sustainable strategy for the revitalization of the tidal Schuylkill corridor. We're committed to working together to achieve positive change along the riverfront for the benefit of Philadelphia and the region.

You can help make it happen!

Volunteer: There are multiple opportunities to get involved and join the effort to revitalize Schuylkill Banks. If you have two hours or ten, are looking for a weekly or seasonal opportunity, we'll gladly welcome you to the team. For more information, please visit our website: www.schuylkillbanks.org.

Donate: Your monetary gifts and in-kind support are vital to our success. For more information, please visit our website: www.schuylkillbanks.org.



Mission: Schuylkill River Development Corporation (SRDC) is a public-private partnership leading the development of **Schuylkill Banks**. With a proven track record in raising funds, promoting city assets, and collaborating with a broad and diverse constituency, SRDC works with federal, state, city and private agencies to coordinate, plan and implement economic, recreational, environmental and cultural improvements and tourism initiatives on the lower Schuylkill River Between the Fairmount Dam and the Delaware River.

SRDC's 2014 audited financial statements are available by request.

129 S. 30th Street, Unit B, Philadelphia, PA 19104

www.schuylkillbanks.org

215-222-6030 • info@schuylkillbanks.org